



GE HealthCare

LOGIQ Fortis™

Ultrasound, the next level



Powerfully streamlined, all-in-one ultrasound system

LOGIQ Fortis— powerful, mobile, multi-purpose ultrasound


LOGIQ Fortis from GE HealthCare is designed to help you deliver confident care in multiple settings. With a sleek and compact design, LOGIQ Fortis can be used in almost any space. Its state-of-the-art technologies give you powerful tools to conduct a full spectrum of ultrasound exams and procedures, and advanced cybersecurity to protect your data. It's an affordable, all-in-one solution that easily customizes to your needs.





Clinical expectations: Exceeded





LOGIQ Fortis is characterized by strength and power... the capacity to enhance your clinical capabilities and increase productivity exponentially.

 **cSound™ Architecture with advanced Speckle Reduction Imaging (SRI):** LOGIQ Fortis images provide outstanding spatial and contrast image resolution, from near field to depth. Every pixel is in focus – just place the transducer and the information you need is there instantly.

 **Advanced flow modes:** Choose from a wide range of flow technologies to drive diagnostic confidence in multiple applications, including Microvascular Imaging (MVI) with Radiantflow™ and B-Flow.

 **High-performance probes:** XDclear™ probes deliver powerful high fidelity and wide bandwidth for deep penetration and high resolution. The new wireless Vscan Air™ CL dual-probe facilitates portable imaging, and is easy to clean and keep sterile.

 **Advanced quantification tools:** Robust tools, such as 2D Shear Wave Elastography and Ultrasound-Guided Attenuation Parameter (UGAP), enhance the precision and speed of imaging across multiple clinical scenarios.

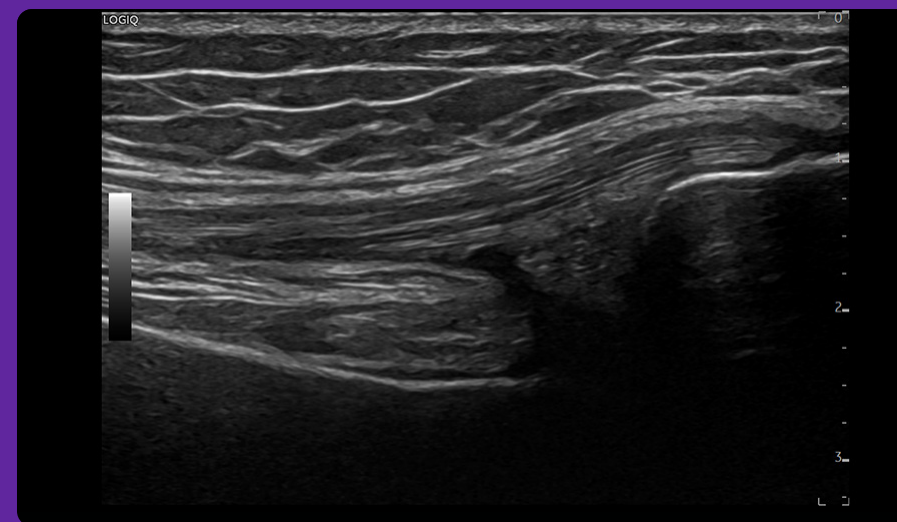
 **AI-based decision support – breast and thyroid:** Breast Assistant and Thyroid Assistant, powered by Koios DS™, provide a lesion quantitative risk assessment aligned to a BI-RADS® or TI-RADS™ category, helping to decrease inter-intra-operator variability and unnecessary biopsies.

LOGIQ Fortis at work

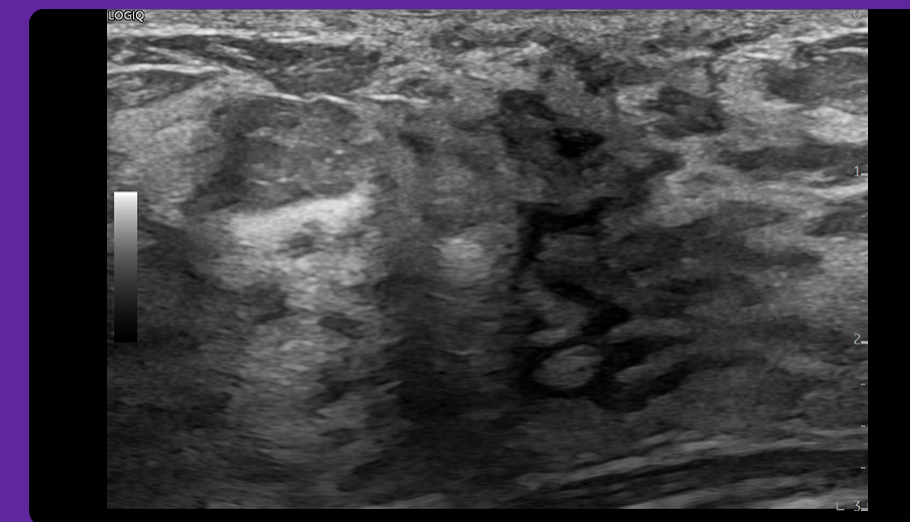
LOGIQ Fortis is a trusted companion for your multi-purpose ultrasound needs.



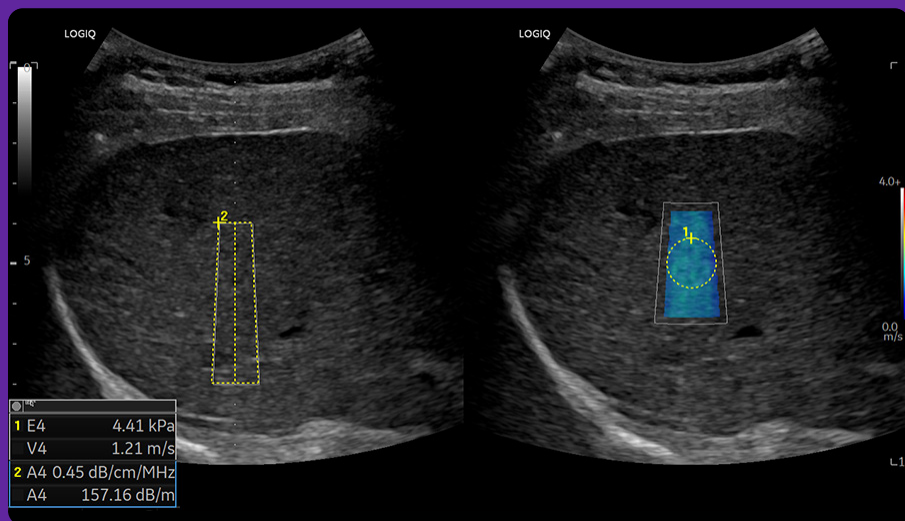
MVI with Radiantflow – groin lymph node, ML6-15-D



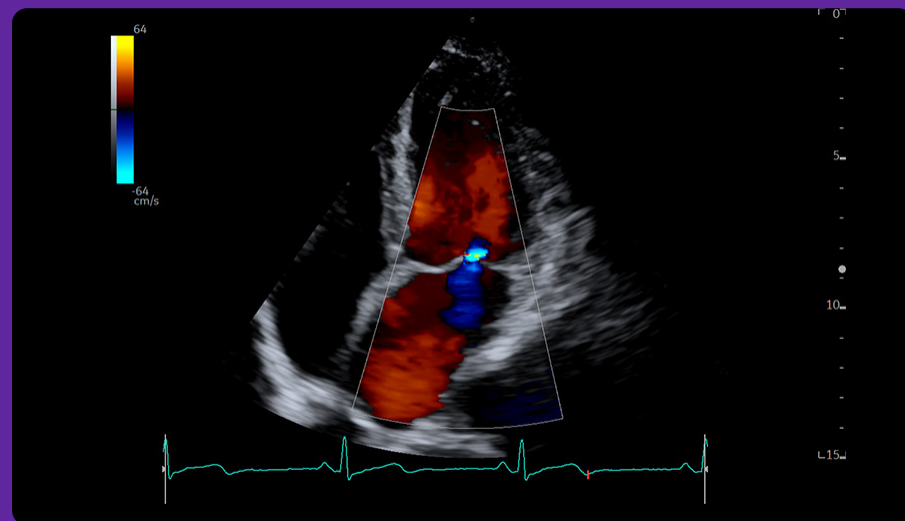
B-Mode with Advanced SRI – knee tendon, ML6-15-D



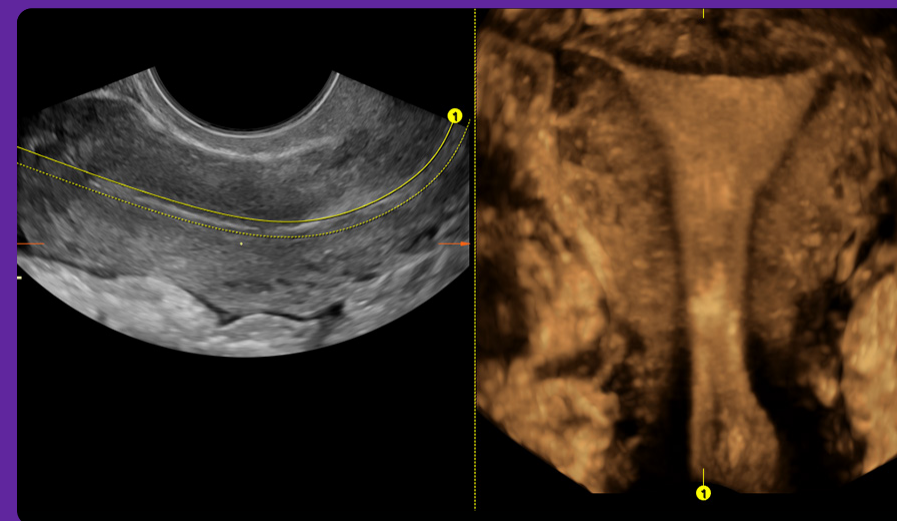
B-Mode with Advanced SRI in breast, ML6-15-D



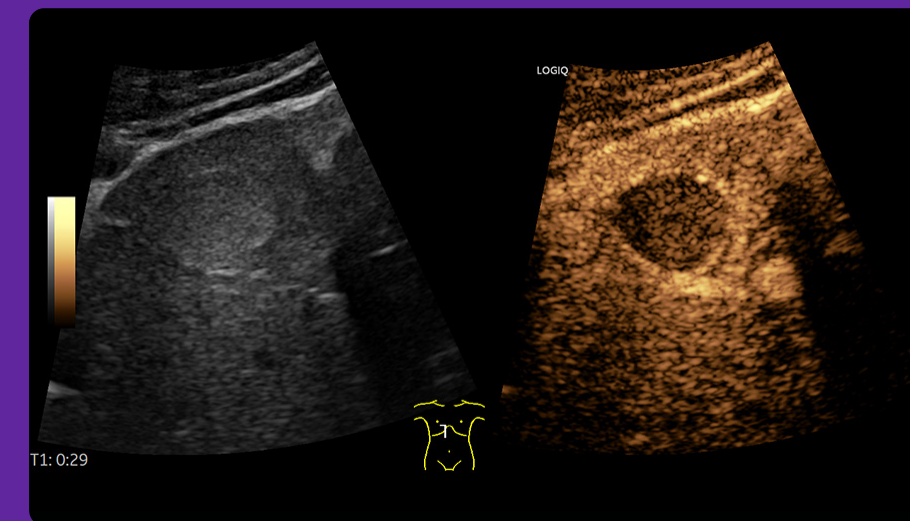
Hepatic Assistant – UGAP and Shear Wave Elastography, C1-6-D



Color flow of mitral valve apical 4-chamber view, M5Sc-D



OmniView dual screen, RIC5-9-D



Contrast enhanced liver lesion, C2-9-D

Productivity & workflow: Optimized

LOGIQ Fortis streamlines workflow with advanced productivity tools that enhance exam consistency and speed, while facilitating accurate diagnoses. Intuitive to operate and easy to clean, the system enables users of all skill levels to work proficiently and manage high patient volumes.



Exceptional mobility and remote operation

The system is easy to maneuver and fits almost anywhere—from patient bedside to exam and operating rooms. You can scan on battery and even control the system remotely.

AI-based assistant tools

LOGIQ Fortis uses artificial intelligence (AI) to help you maximize exam speed and accuracy. Auto-Preset Assistant, for example, automatically activates the correct preset for the anatomy being scanned. Auto-Renal Measure Assistant automatically detects the kidney and measures the length, height, and width.

EZ Imaging ergonomics

The combination of customizable probe pre-sets, simplified touch panel, and quick patient set-up enables users to reduce keyboard time by 32% with 38% fewer keystrokes per exam.¹

Your investment: Maximized

An ultrasound system is not just an investment for your facility—it's a promise to your clinicians and patients. The resources supporting LOGIQ Fortis, from training and security to asset management, are designed to help you consistently deliver on the promise of high-quality, accessible ultrasound care.



Configurable

Choose from a full suite of robust, standard features and options to configure the optimal system to meet your clinical needs.

Operational support

Your system is backed by digital operational support that enhances return on investment (ROI), including performance analytics, software/security updates, live clinical training, and advanced system diagnostics.

SonoDefense security

Our multi-layer approach to cybersecurity and data privacy protection protects your system and data around the clock. Your investment is secured—and so is your confidence.

Verisound

You're focused on patients, and we're fully focused on you. LOGIQ with Verisound™ digital and AI ultrasound solutions applies decades of ultrasound experience to minimize chaos, eliminate the mundane, and improve your day-to-day – because an efficient workflow means more focused time on patient care.



LOGIQ Fortis

Powerfully streamlined ultrasound



GE HealthCare

Products mentioned in the material may be subject to government regulations and may not be available in all countries. Shipment and effective sale can only occur after approval from the regulator. Please check with local GE HealthCare representative for details.

© 2024 GE HealthCare. LOGIQ Fortis, Verisound, cSound, Radiant/low, and XDclear are trademarks of GE HealthCare. Koios DS is a trademark of Koios Medical. GE is a trademark of General Electric Company used under trademark license.

January 2024
JB27551XX