



GE HealthCare

# LOGIQ™ E10s

Ultrasound, the next level



Empowering you to make the difference

# Next-generation, leadership ultrasound

The LOGIQ E10s helps ultrasound departments meet critical challenges with confidence, from high patient volume and complex cases to staff shortages and less experienced users. Its advanced imaging and AI-based workflow tools empower efficient care across a wide range of clinical scenarios. Decision support, training and clinician collaboration tools enhance staff expertise and productivity. Built on a leading-edge digital platform, the LOGIQ E10s is designed to address today's needs while keeping your department at the forefront of clinical imaging and operational excellence.



**cSound** = **48x** data throughput + **10x** processing power

## Confident diagnosis

The LOGIQ E10s system provides a new standard in imaging so clinicians can scan, diagnose, and treat a wide range of patients across a broad spectrum of conditions with a high level of confidence.



### cSound™ Architecture with Advanced Speckle Reduction Imaging (SRI)

Outstanding spatial and contrast image resolution, from near field to depth. There's no need to adjust the focus manually—the information you need is there instantly.

### Choice of high-performance probes

E-Series and XDclear™ probes deliver powerful high fidelity and wide bandwidth for impressive deep penetration and high resolution. The new wireless Vscan Air™ CL dual-probe facilitates portable imaging, with a design that's easy to clean and keep sterile.

### Advanced flow modes

Choose from a wide range of flow technologies to drive diagnostic confidence in multiple applications, including Color Flow, Power Doppler Imaging, Microvascular Imaging (MVI) with Radiantflow™ as well as B-Flow and Micro B-Flow imaging. The combination of high resolution and sensitivity assists clinicians in evaluating small abdominal or superficial lesions, tiny lymph nodes, and large vessels in the abdomen, head and neck, and extremities.

### Breast Assistant and Thyroid Assistant, powered by Koios DS™

Gain an instant second opinion with onboard AI-based decision support tools. Trained on 1M+ cases, they provide a lesion quantitative risk assessment aligned to a BI-RADS® or TI-RADS™ category, helping to decrease inter-intra-operator variability and unnecessary biopsies.



# Comprehensive tools

The LOGIQ E10s helps improve the precision and speed of diagnosis, guidance and treatment across multiple clinical scenarios, including abdominal imaging; interventional; management of liver disease; breast, small parts and musculoskeletal imaging; and OB/GYN, pediatric and cardiovascular studies.

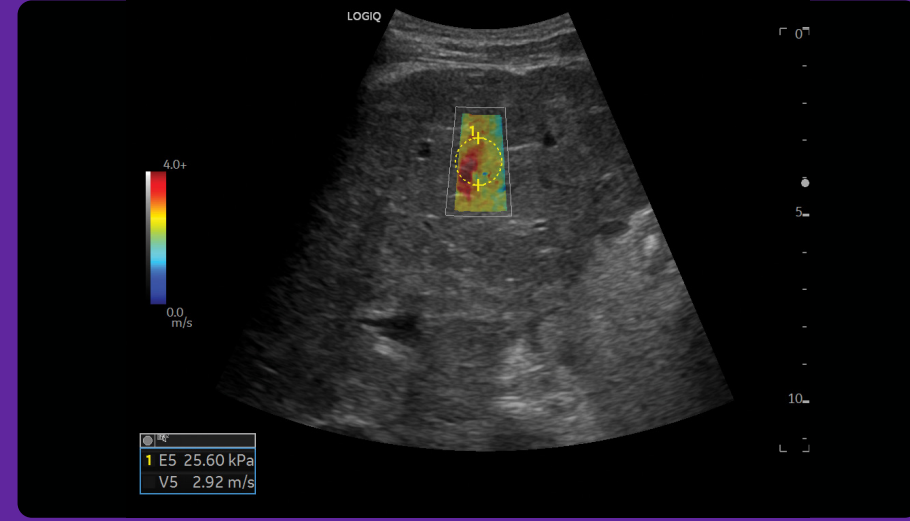
## Available tools include:

**2D Shear Wave & Strain Elastography:** Determine qualitative, quantitative and semi-quantitative assessment of tissue elasticity. Now available with a Shear Wave Elastography Quality Indicator to support confident measurements.

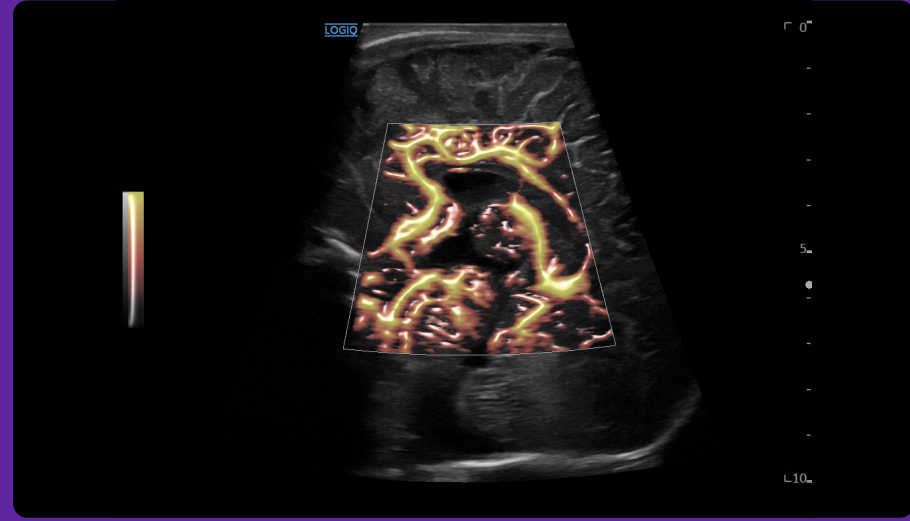
**Ultrasound-Guided Attenuation Parameter (UGAP):** Quantify liver steatosis to aid in early identification and monitoring of patients with MASLD, NASH or ASH.

**Contrast-enhanced ultrasound (CEUS):** Visualize tissue perfusion and lesion vascularity clearly to optimize diagnostic accuracy.

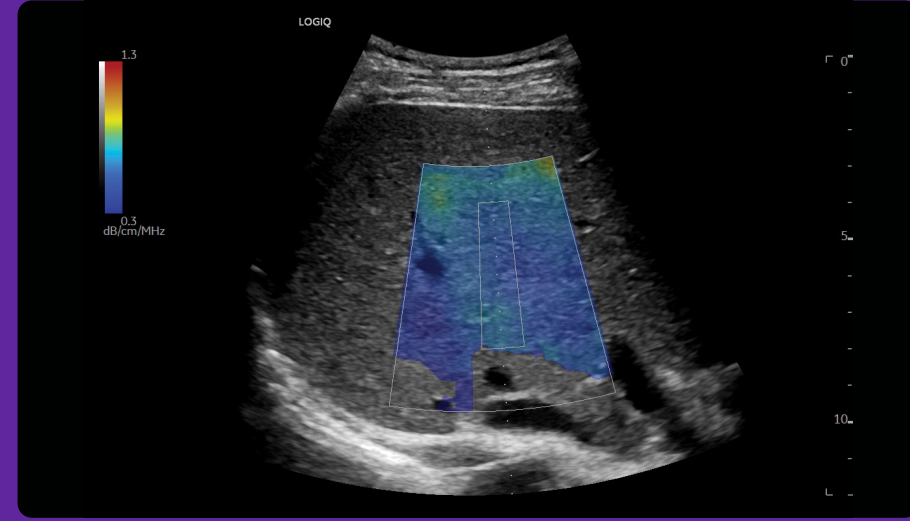
**Photo Assistant app:** Acquire photos of relevant anatomy via an Android™ smart device and include them with the clinical images in the report.



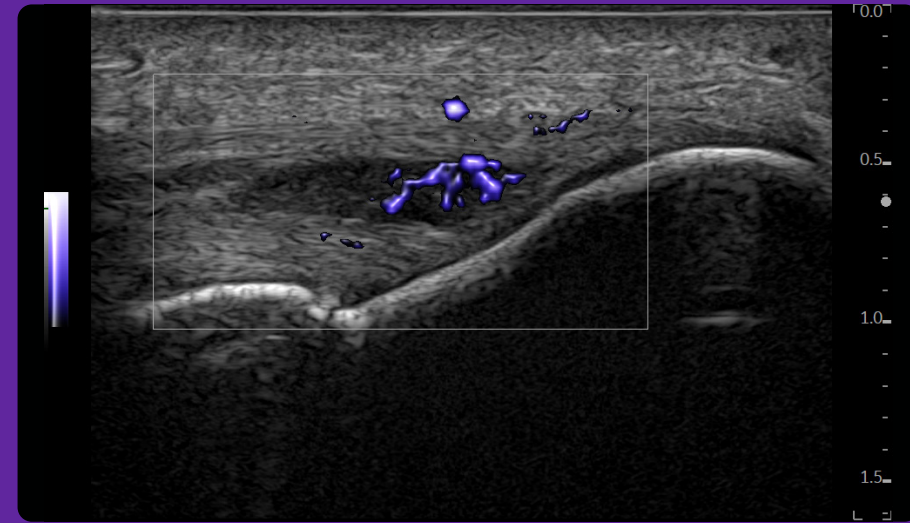
Liver 2D Shear Wave Elastography, C1-6-D



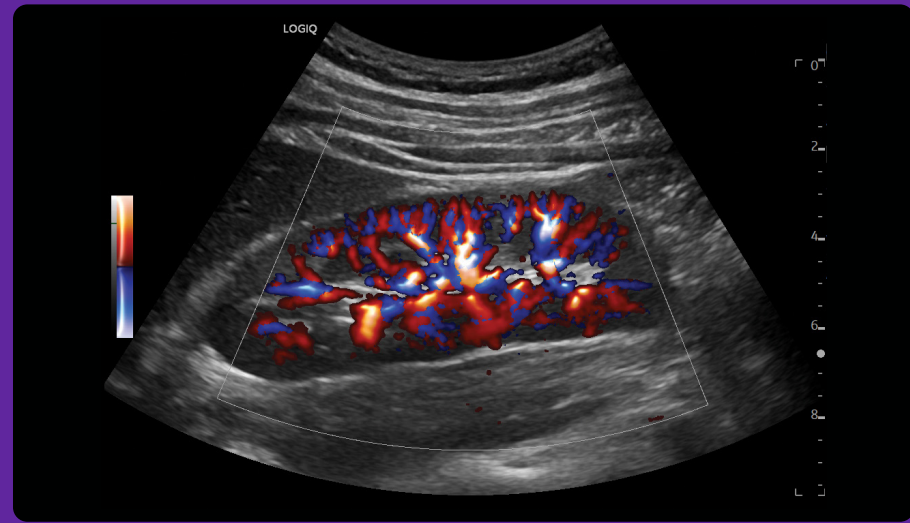
Neonatal brain with MVI & Radiantflow, L2-9-D



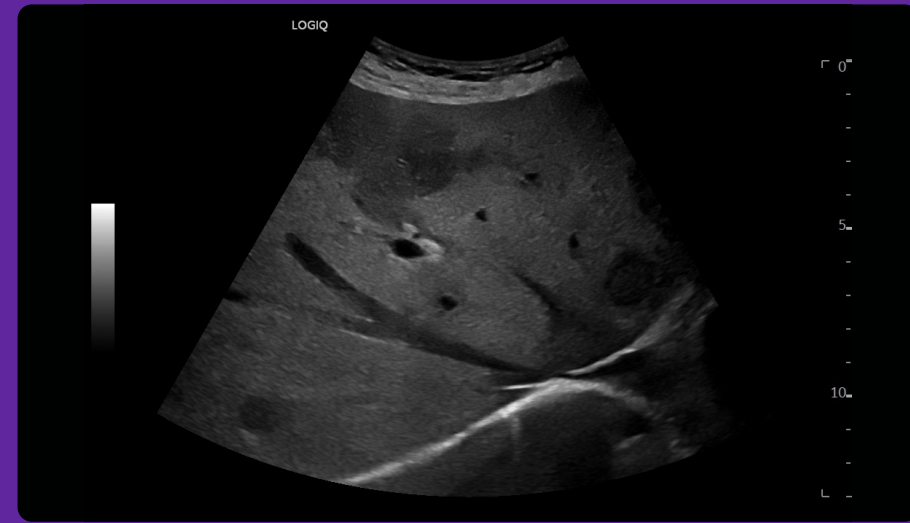
Liver UGAP, C1-6-D



MVI with Radiantflow – elbow, L6-24-D



Radiantflow color imaging of kidney, C1-6-D




Liver, C1-6-D





The digitally-advanced LOGIQ Series leverages artificial intelligence and machine learning to provide advanced productivity and decision support tools that can help clinicians improve diagnostic confidence, ensure consistency and increase efficiency.



## Concise workflow

AI-based assistant tools	Productivity enhancers
--------------------------	------------------------

Harness artificial intelligence (AI) to provide productivity and decision support tools that enhance diagnostic confidence and efficiency.

- **Auto-Preset Assistant:** Automatically activates the correct preset for the anatomy being scanned – excellent for varied caseloads and high-volume settings.
- **Auto Abdominal Color Assistant:** Detects which abdominal organ is being scanned and automatically switches to the optimal color flow parameters.
- **Auto Doppler Assistant:** Automatically adjusts the color box and angle so users can complete exams in 20% less time with 50% fewer keystrokes.<sup>1</sup>
- **Auto Lesion Segmentation:** Automatically traces lesion boundaries and generates two-dimensional measurements in a few keystrokes.
- **Auto-Renal Measure Assistant:** Automatically detects the kidney and measures the length, height, and width.
- **OB Measure Assistant:** Reduces keystrokes and enhances reproducibility by automating key fetal measurements.

- **Hepatic Assistant:** Combines 2D Shear Wave Elastography and UGAP in a single exam with the push of a button.
- **EZ Imaging:** Enhances workflow with customizable probe pre-sets, simplified touch panel, and quick patient set-up, resulting in 32% less time with 38% fewer keystrokes.<sup>1</sup>
- **Scan Assistant:** Customizable automation assists users at each step of the exam, helping to reduce keystrokes and exam times.
- **Compare Assistant:** View a prior study – ultrasound, mammography, CT or MR – and current images together in real time via a split screen on the monitor.
- **Start Assistant:** Automatically launches the preferred setting when the user selects an exam description.

**Verisound**  
 You're focused on patients, and we're fully focused on you. LOGIQ with Verisound digital and AI ultrasound solutions applies decades of ultrasound experience to minimize chaos, eliminate the mundane, and improve your day-to-day – because an efficient workflow means more focused time on patient care.



**Streamlined functionality**

- **Ease of operation:** The user interface has easy-to-reach controls, an adjustable floating keyboard, and an articulating monitor that adjusts for viewing both on- and off-axis.
- **Robust DICOM® connectivity:** Allows images to be saved to a central location and reviewed alongside other imaging modalities. Includes new Image Tagging and simplified user interface for connectivity.



# Smart investment



Stay at the forefront of clinical imaging with our digital platform, engineered explicitly so you can add next-generation capabilities in the years ahead.

## Scalable to a whole-body solution

A full suite of robust, standard features and scalable options enable you to configure the optimal system to meet your abdominal, cardiac, OB/GYN, vascular, breast, and musculoskeletal imaging needs.

## SonoDefense

GE HealthCare's multi-layer approach to cybersecurity helps keep the systems safe and functional in the face of cyberthreats and helps protect patient data from unauthorized access.

## Digital support

Sophisticated operational support to help you enhance ROI, including performance analytics, software/security updates, live clinical training, and advanced system diagnostics.

Ultrasound systems for today,  
platform for tomorrow.



1. Based on an internal GE HealthCare study. Data available upon request.

Products mentioned in the material may be subject to government regulations and may not be available in all countries. Shipment and effective sale can only occur after approval from the regulator. Please check with local GE HealthCare representative for details.

© 2024 GE HealthCare. LOGIQ, Verisound, cSound, Radiant/low, Vscan Air, and XDclear are trademarks of GE HealthCare. Koios DS is a trademark of Koios Medical. DICOM is the registered trademark of the National Electrical Manufacturers Association for its standards publications relating to digital communications of medical information. Android is a trademark of Google LLC. BI-RADS and TI-RADS are trademarks of the American College of Radiology. GE is a trademark of General Electric Company used under trademark license.

February 2024  
JB27649XX

